



Hangzhou Fctel Technology Co.,Ltd

SELECTION GUIDE



official website

Development Process



2020
Deeply expand the product line and enter the new industrial blue ocean

2018-2019
Passed national high-tech enterprise certification, obtained more than 10 software copyrights and patent certificates

2014-2017
Through the various reports of Hangzhou High-tech Enterprise Certification, Ministry of Information Industry, and Ministry of Public Security

2010-2013
Basically complete the company's main categories of product research and development, has been the most comprehensive in the industry, and passed ISO9001 quality certification

2009
Hangzhou FCTEL Technology was founded. The core personnel have been deeply involved in the communications industry for more than 10 years



Company profile

We are a company specializing in optical fiber transmission equipment, data communication equipment and network access equipment. It is a **national high-tech enterprise** and a **high-tech enterprise in Hangzhou**. It is a company with **independent research and development products** in the industry

Main products category:

- ◆ Industrial Ethernet Switch/Industrial Fiber Media Converter;
- ◆ General/POE/SNMP/Physical Isolation Fiber Media Converter;
- ◆ RACK Mount 1-960*Voice/E1 PCM Multiplexer;
- ◆ 1-64*E1+FE/GE/Physical Isolation FEPDH Multiplexer;
- ◆ E1/V.35/V.24/RS530/Co-Directional 64K Converter;
- ◆ Dry Contact Fiber MUX;
- ◆ 4-20m Analog/CAN/PROFIBUS/USB MUX;
- ◆ E1/V.35/V.24/VOICE Over Ethernet(TDM Over IP);
- ◆ Serialport/DryContact/analog Over Ethernet;
- ◆ XLR / AES audio fiber mux/XLR audio over E1;
- ◆ E1 Impedance Converter/E1 protection unit/OEO Series Products;

Focus on optical communication research and development for 20 years, we can provide customers with customized product services, and technical control standards to achieve a win-win situation.



Enterprise honor



National High-tech Technology Enterprise Certificate



Hangzhou High-tech Technology Enterprise Certificate



Top 10 China Security Video Monitoring Brands



Intellectual Property Rights Certificates



Quality Management System Certificates



CE



CE



China Manufacturing Network Certification Supplier



SGS



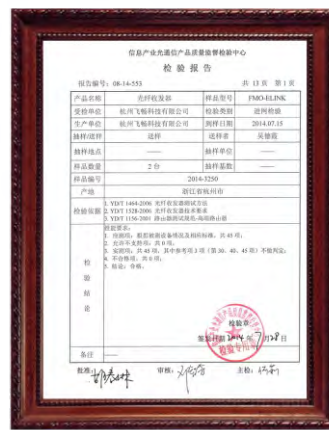
SGS



Utility Model Patent Certificate



Telcome Equipment Network License



Ministry of Information Industry Test Report



Ministry of Information Industry Test Report



Ministry of Information Industry Test Report



Ministry of Information Industry Test Report



Ministry of Information Industry Test Report



Ministry of Information Industry Test Report



Ministry of Information Industry Test Report



Ministry of Information Industry Test Report



Ministry of Information Industry Test Report



Ministry of Information Industry Test Report



Ministry of Information Industry Test Report



Software Copyright



Software Copyright



Software Copyright



Software Copyright



Software Copyright



Software Copyright



Software Copyright



Software Copyright



- ◆ Unmanaged 5 ports FE Switch
- ◆ Unmanaged 5 ports GE Switch
- ◆ Unmanaged 8 ports FE Switch
- ◆ Unmanaged 8 ports GE Switch



- ◆ 1 Channel FE/GE Fiber Media Converter
- ◆ 2 Channel FE/GE Fiber Media Converter
- ◆ 1ch FE/GE Fiber Media Converter (can support LFP,MINI TYPE)



- ◆ 4FE Fiber Media Converter
- ◆ 4GE Fiber Media Converter
- ◆ 4FE+2ch Serial Fiber Media Converter
- ◆ 4GE+2ch Serial Fiber Media Converter



- ◆ 4*FE+2*100 Base-FX Cascade (Node) Style Fiber Media Converter
- ◆ 4*GE+2*1000 Base-X Cascade (Node) Style Fiber Media Converter



- ◆ 8*FE to 1*100 Base-FX Fiber Media Converter
- ◆ 8*FE to 1*1000 Base-X Fiber Media Converter
- ◆ 8*FE to 2*100 Base-FX Fiber Media Converter
- ◆ 8*FE to 2*1000 Base-X Fiber Media Converter
- ◆ 10*FE to 2*1000 Base-X Fiber Media Converter



- ◆ 4*FE+4*100 Base-FX to 2*1000 Base-X Fiber Media Converter



- ◆ Industrial 24*100Base-FX(SFP)+2GE (ComboPort) Ethernet Switch
- ◆ Industrial 24*100Base-FX(SFP)+4GE (ComboPort) Ethernet Switch



- ◆ Industrial 16*1000Base-FX(SFP)+8GE Ethernet Switch (managed)
- ◆ Industrial 4*1000Base-FX(SFP)+24GE Ethernet Switch (managed)



- ◆ Multi-Service Aggregation Switch

Managed Din-Rail Industrial Ethernet Switch, Support Console/WEB/Independent SNMP Management



- ◆ Managed 1/2/4FE to 1*100Base-FX Fiber Media Converter
- ◆ Managed 1/2/4FE to 1*1000Base-X Fiber Media Converter



- ◆ Managed 8*FE to 1*100 Base-FX Fiber Media Converter
- ◆ Managed 8*FE to 2*1000 Base-X Fiber Media Converter (2*RS232/RS485/RS422 For Option)



- ◆ Managed 4*FE+4*100 Base-FX+2*1000 Base-X Fiber Media Converter (2*RS232/485/422 for option)



- ◆ 4FE+1*RS232/422/485 to 1*100 Base-FX Converter
- ◆ 2GE+1*RS232/422/485 to 1*1000Base-X Converter(Support Console/WEB/Independent SNMP Management)

Managed Physical Isolation Din-Rail Industrial Switches



- ◆ Managed 4*FE(Physical Isolation) Fiber Media Converter(Total Bandwidth4*100M=400M)
- ◆ Managed 4*GE(Physical Isolation) Fiber Media Converter(Total Bandwidth4*1000M=4000M)



- ◆ Managed 1*GE+1*FE(Physical Isolation) Fiber Media Converter(Total Bandwidth 1000M+100M=1100M)
- ◆ Managed 1*GE+1*GE(Physical Isolation) Fiber Media Converter(Total Bandwidth 2*1000M=2000M)



- ◆ Industrial 8*GE(Physical Isolation) to 2*10G Fiber Media Converter(Total Bandwidth8*1000M,Support SNMP Management,Support 1+1Fiber Backup)

Ring Network Din-Rail Industrial Ethernet Switch



- ◆ 4*FE+4*RS232/RS422/RS485 to 2*1000 Base X Ring Network Ethernet Switches
- ◆ 4*GE+4*RS232/RS422/RS485 to 2*1000 Base X Ring Network Ethernet Switches (Support Console/WEB Management, built-in Lithium Battery)



- ◆ 8*FE+2*1000Base-X Ring Network Ethernet Switches
- ◆ 4*FE+4*100Base-FX+2*Base 1000-X(2*RS232/RS422/RS485 For Option,Support Console/WEB Management)



- ◆ 8*GE+4*1000Base-X Ring Network Switch
- ◆ 6*GE+6*1000Base-X Ring Network Switch (Support Multi-Fiber Ring,Console/WEB Management)



- ◆ 16GE+4 SFP Switch
- ◆ 16GE+8 SFP Switch



- ◆ Ring network 4FE+4SFP(100Base-FX) to 2 SFP(1000Base-FX)+2ch 300M wifi Switch
- ◆ 4FE to one optic+1ch 300M wifi Switch

Unmanaged Fiber Media Converter



- ◆ FE to 100Base-FX Fiber Media Converter
- ◆ GE to 1000Base-X Fiber Media Converter (Support Internal/External/AC+DC Dual Power)



- ◆ 1Channel 10G Fiber Media Converter (External Power)



- ◆ 2/4FE Fiber Media Converter
- ◆ 2/4GE Fiber Media Converter (Support Internal AC/DC/AC+DC Power)



- ◆ 4*FE to 100 Base-FX Fiber Media Converter (External Power)
- ◆ 4*GE to 1000 Base-X Fiber Media Converter (External Power)
- ◆ 2*FE to 2*100 Base-FX Fiber Media Converter (External Power)
- ◆ 2*GE to 2*1000 Base-X Fiber Media Converter (External Power)



- ◆ 4*FE Fiber Media Converter
- ◆ 4*GE Fiber Media Converter
- ◆ 8*FE to 100Base-FX Fiber Media Converter
- ◆ 8*FE to 1000Base-X Fiber Media Converter



- ◆ 4FE to 2 Optic Port Cascade Media Converter
- ◆ 4GE to 2 Optic Port Cascade Media Converter
- ◆ 8FE to 2 Optic Port Cascade Media Converter
- ◆ 8GE to 2 Optic Port Cascade Media Converter



- ◆ 16FE to 100 Base-FX Media Converter
- ◆ 16FE to 1000 Base-FX Media Converter



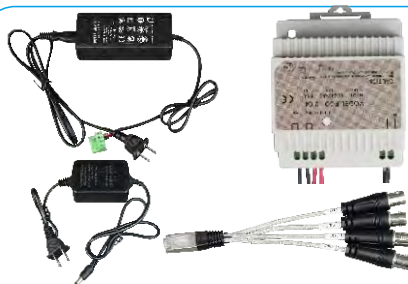
- ◆ Converged 2*FE+6*100 Base-FX (SFP) Ethernet Switch
- ◆ Converged 2*GE+6*100 Base-FX (SFP) Ethernet Switch
- ◆ Converged 1*GE+8*100 Base-FX (SFP) Ethernet Switch
- ◆ Converged 1*GE+8*1000 Base-FX (SFP) Ethernet Switch



- ◆ 24*100 Base-FX(SFP)+2*GE(Combo Port) Ethernet Switch(Optic Converged)
- ◆ 24*100 Base-FX(SFP)+4*GE(Combo Port) Ethernet Switch(Optic Converged)



- ◆ 16*FE+2*1000 Base-X(SFP) Ethernet Switch
- ◆ 24*FE+2*1000 Base-X(SFP) Ethernet Switch

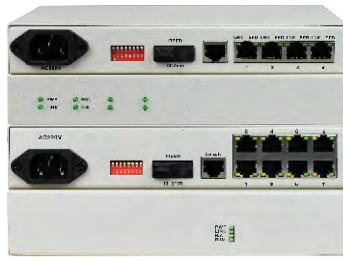


- ◆ 5V2A;12V1A;12V2A;48V1A;48V2A Switching Power Supply
- ◆ Industrial Din-Rail 12V4A;12V2A Switching Power Supply
- ◆ 1*RJ45 To 2*E1 Connecting Cable

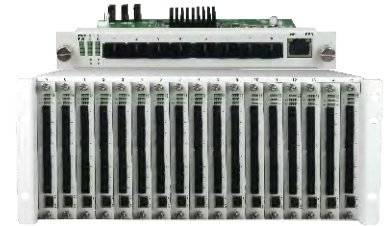
Managed Fiber Media Converter



- ◆ 1*FE to 100 Base-FX Fiber Media Converter (Can Be Managed Remotely)
- ◆ 1*GE to 1000 Base-X Fiber Media Converter (Can Be Managed Remotely)
- ◆ 2*FE to 100 Base-FX Fiber Media Converter (Can Be Managed Remotely)
- ◆ 2*GE to 1000 Base-X Fiber Media Converter (Can Be Managed Remotely)



- ◆ 4*FE to 100 Base-FX Fiber Media Converter (Can Be Managed Remotely)
- ◆ 4*GE to 1000 Base-X Fiber Media Converter (Can Be Managed Remotely)
- ◆ 8*FE to 100 Base-FX Fiber Media Converter (Can Be Managed Remotely)
- ◆ 8*GE to 1000 Base-X Fiber Media Converter (Can Be Managed Remotely)



- ◆ 4U Management 128*1000M Fiber Direction (Can Connect to 128 Fiber Media Converters)

Managed Physical Isolation Fiber Media Converter—Each Ethernet with Independent Bandwidth and Physical Channel



- ◆ Managed 4*FE (Physical Isolation) Fiber Media Converter (Total Bandwidth 4*100M=400M)
- ◆ Managed 4*GE (Physical Isolation) Fiber Media Converter (Total Bandwidth 4*1000M=4000M)



- ◆ Managed 1*GE+1*FE (Physical Isolation) Fiber Media Converter (Total Bandwidth 1000M+100=1100M)
- ◆ Managed 1*GE+1*GE (Physical Isolation) Fiber Media Converter (Total Bandwidth 2*1000M=2000M)



- ◆ Physical Isolation 2*GE+4*FE to 2*3.125G Fiber Media Converter (Total Bandwidth 2400M, Support 1+1 Fiber Backup)
- ◆ Physical Isolation 8*GE to 2*10G Fiber Media Converter (Total Bandwidth 8*1000M, Support 1+1 Fiber Backup)

Managed 1+1 Fiber Backup Fiber Media Converter

Ethernet+Serial Fiber Media Converter



- ◆ 1+1 Fiber Backup 4*FE Fiber Media Converter
- ◆ 1+1 Fiber Backup 4*GE Fiber Media Converter (When The Main Fiber Out Of Order, the Backup Fiber Works)



- ◆ 2*FE+4*RS232/422/485 Fiber Media Converter
- ◆ 4*FE+2*RS232/422/485 Fiber Media Converter
- ◆ 4*GE+2*RS232/422/485 Fiber Media Converter



- ◆ 4*FE+16*RS232/422/485 Fiber Media Converter

POE Fiber Media Converter



- ◆ 1*FE POE (af/at) Fiber Media Converter
- ◆ 1*GE POE (af/at) Fiber Media Converter
- ◆ 2*FE POE (af/at) Fiber Media Converter
- ◆ 2*GE POE (af/at) Fiber Media Converter (Built-in Power)



- ◆ 4*FE POE (af/at) Fiber Media Converter
- ◆ 4*GE POE (af/at) Fiber Media Converter (Built-in Power)



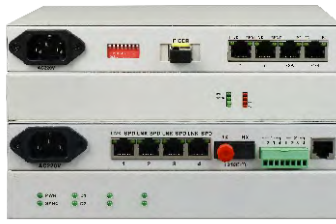
- ◆ 8*FE POE (af/at) Fiber Media Converter
- ◆ 8*GE POE (af/at) Fiber Media Converter (Built-in Power)

Voice Fiber Multiplexer

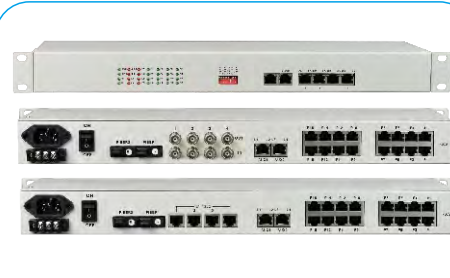
Multi-service Voice Fiber Multiplexer (FXO/FXS/E&M2-4line audio/magnetic telephone)



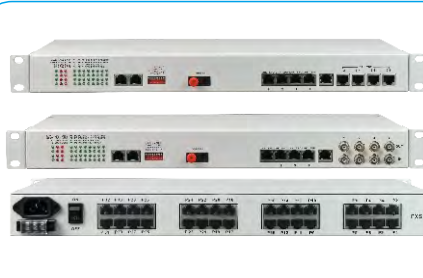
- ◆ 1-4*voice Fiber MUX
- ◆ Desktop 1-16*Voice Fiber MUX
- ◆ Fiber-30 Voice Multiplexer (Support 1+1Fiber Backup)



- ◆ Desktop 4*Voice+4*FE+2*Serial
- ◆ Desktop 4*Voice+4*GE+2*Serial
- ◆ Desktop 4*Voice+2*FE+2*GE+2*Serial (Physical Isolation,Bandwidth2200M)
- ◆ Desktop 8*Voice+2*FE Fiber Mux
- ◆ Desktop 8*Voice+2*GE Fiber Mux



- ◆ 16*Voice+4/8*E1+4*FE+4*Serial
- ◆ 16*Voice+4/8*E1+4*GE+4*Serial
- ◆ 16*Voice+4/8*E1+4FE(Physical Isolation)+4*Serial(Support 1+1 Fiber Backup/ Console/SNMP Management)



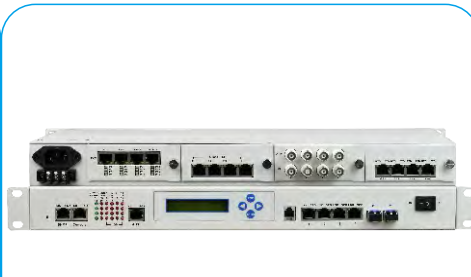
- ◆ 32*Voice+4/8*E1+4*FE+4*Serial
- ◆ 32*Voice+4/8*E1+4*GE+4*Serial
- ◆ 32*Voice+4/8*E1+4FE(Physical Isolation)+4*Serial(Support 1+1 Fiber Backup/ Console/SNMP Management)



- ◆ 64*Voice+4/8*E1+4*FE+4*Serial
- ◆ 64*Voice+4/8*E1+4*GE+4*Serial
- ◆ 64*Voice+4/8*E1+4FE(Physical Isolation) (Support 1+1 Fiber Backup/Console/ SNMP Management)



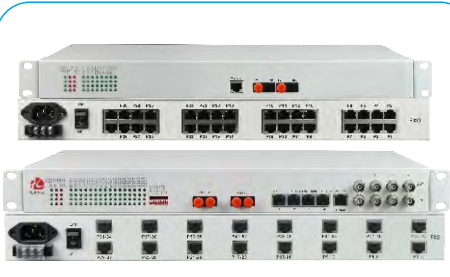
- ◆ 32*Voice+4/8/16*E1+4*FE+2*GE (Physical Isolation)
- ◆ 32*Voice+4/8/16*E1+4*FE+4*GE(Physical Isolation)(Support1+1Fiber Backup/Console/ SNMP Management)
- ◆ 32Voice+4/8*E1+8FE(Physical Isolation)



- ◆ Modular Multi-Service PDH Mux(4Slots, Support Max4*4E1/4*FE/4*GE/4*FE (Physical Isolation)/4*16Voice/4*2V.35/ 4*2V.24/ 4*8 Serial,Support 1+1Fiber Backup,Console/SNMP Management)



- ◆ Industrial Din-Rail4*Voice+1*FE Fiber MUX
- ◆ Industrial Din-Rail4*Voice+1*GE Fiber MUX(ip40 Protection,Support 35mm Din-Rail Type and wall-Mounted installation, Working Temperature:-40°C~+85°C)



- ◆ 30*Voice Ring Network Fiber MUX
- ◆ 60*Voice Ring Network Fiber MUX (Center30/60 FXO Interface Phone,Each Node is Sets 1-2 FXS Telephone Interface, Loop Up To 30/60 Words,Support Node Type,Ring Network Redundant Fiber Link)



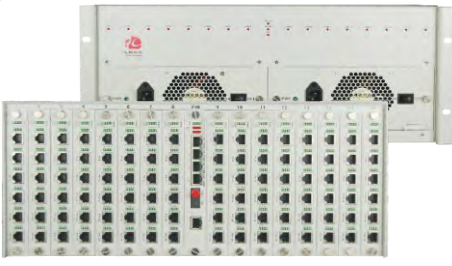
- ◆ 4*Voice Fiber MUX+4*FE/GE
- ◆ 4*Voice Fiber MUX+1*FE/GE
- ◆ 8*Voice Fiber MUX+1*FE/GE
- ◆ 32*Voice Fiber MUX+2*FE/GE
- ◆ 64*Voice Fiber MUX+2*FE/GE



- ◆ 32voice+8FE(Physical Isolation)+8E1 (Support 1+1Fiber Backup,Console/ SNMP Management)



Multi-Service Rack Type Voice Fiber Multiplexer



- ◆1-384*Voice Multi-Service Rack Mount Fiber Multiplexer(4U rack, support 4GE/4FE/E1/1+1 fiber backup/AC+DC dual power)

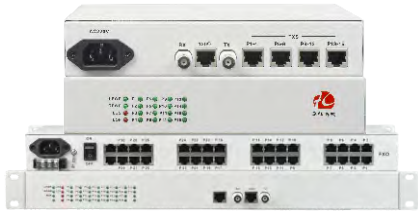


- ◆1-360*Voice Multi-Service Rack Mount Fiber Multiplexer(6U rack, support 4GE/4FE/E1/1+1 fiber backup/AC+DC dual power)



- ◆1-960*Voice Multi-Service Rack Mount Fiber Multiplexer(8U rack, support 4GE/4FE/E1/1+1 fiber backup/AC+DC dual power)

Voice Over E1 PCM



- ◆E1-16*Voice PCM Mux (Desktop Type)
- ◆E1-30*Voice PCM Mux (1U Rack Type)



- ◆1+1E1 Backup 30*Voice Over E1 PCM (Two E1 for backup, when the main E1 is out of order, the backup E1 works)



- ◆E1-60*Voice 2E1 Multiplexer(1U Rack Type)

Multi-Service E1 PCM Multiplexer



- ◆E1-4*Voice+1FE+2Serial PCM Mux (Desktop Type)
- ◆E1-8*Voice+2Serial PCM Mux (Desktop Type)
- ◆32 Voice+4FE Over 2E1 PCM MUX



- ◆E1-16*Voice+4*FE+4*Serial PCM Multiplexer
- ◆E1-30*Voice+1*FE+1*Serial PCM Multiplexer
- ◆30 Voice+4FE+Console Over E1 PCM MUX



- ◆30 FXS/FXO over E1 (CAS Signaling)

Integrated Rack

Multi-Service Mux

Voice over IP Gateway



- ◆Integrated Rack Voice Over E1 (4U/6U)



- ◆4Video+4GE+N*Dry Contact/Serial/Telephone Fiber Mux
- ◆4Video+2GE(Physical Isolation)+N*Dry Contact/Serial/Telephone Fiber Mux
- ◆4Video+2GE+2FE(Physical Isolation)+N*Dry Contact/Serial/Telephone Fiber Mux
- ◆4Video+4FE(Physical Isolation)+N*Dry Contact/Serial/Telephone Fiber Mux
- ◆4FE(Physical Isolation)+N*Dry Contact/Serial/Telephone Fiber Mux



- ◆8Voice Over IP (VOIP)

PDH Fiber Multiplexer



- ◆ 4E1+1FE PDH Mux (DesktopType)
- ◆ 4E1+1FE PDH Mux (19inch1U)
- ◆ 4E1+1GE PDH Mux (DesktopType)
- ◆ 4E1+1GE PDH Mux (19inch1U)



- ◆ 4E1+4FE PDH Mux (19inch1U)
- ◆ 8E1+8FE PDH Mux (DesktopType)
- ◆ 8E1+8FE PDH Mux (19inch1U)



- ◆ 4E1+4FE PDH Mux
- ◆ 4E1+4GE PDH Mux
- ◆ 4E1+4FE(Physical Isolation)PDH Mux (Support 1+1fiber backup,Console/SNMP management)



- ◆ 8E1+4FE PDH Mux
- ◆ 8E1+4GE PDH Mux
- ◆ 8E1+4FE(Physical Isolation)PDH Mux (Support 1+1fiber backup,Console/SNMP management)



- ◆ 16E1+4FE PDH Mux
- ◆ 16E1+4GE PDH Mux
- ◆ 16E1+4FE(Physical Isolation)PDH Mux (Support 1+1fiber backup,Console/SNMP management)



- ◆ 16E1+8FE PDH Mux
- ◆ 16E1+12FE+8Voice Multi-sevrice Fibet Mux
- ◆ 16E1+8FE(Physical Isolation)PDH Mux (Support 1+1fiber backup,Console/SNMP management)



- ◆ 32E1+4GE PDH Mux
- ◆ 64E1+4GE PDH Mux (Support 1+1fiber backup,Console/SNMP management)



- ◆ 8E1(75Ω+120Ω)+4FE PDH Mux
- ◆ 8E1(75Ω+120Ω)+4GE PDH Mux
- ◆ 8E1(75Ω+120Ω)+4FE(Physical Isolation) PDH Mux(Support 1+1fiber backup, Console/SNMPmanagement)



- ◆ 16E1+4FE LCD Display PDH Mux
- ◆ 16E1+4GE LCD Display PDH Mux
- ◆ 16E1+4FE(Physical Isolation) LCD Display PDH Mux(Support 1+1fiber backup,Console/SNMP management)



- ◆ 16E1+3FE+1*100 Base-FX PDH Mux
- ◆ 16E1+3GE+1*1000 Base-X PDH Mux (Support 1+1fiber backup,Console/SNMP management)



- ◆ Modular Multiservice PDH Mux with LCD display(4slots,support max4*4E1/4*FE/4*GE/4*FE Physical isolation/4*16Voice/4*2V.35/4*2V.24/4*8Serial,Support 1+1 fiber backup, Console/SNMP managed)



- ◆ FCK11/FCK12/FCK14/FCK16
- ◆ Integrated Rack PDH Fiber MUX (1U/2U/4U/6U)

E1/Ethernet Interface Converter



- ◆ Framed E1-FE Interface Converter
- ◆ Unframed E1-FE Interface Converter
- ◆ Unframed E1-4*FE Interface Converter
- ◆ Framed E1-4*FE Interface Converter

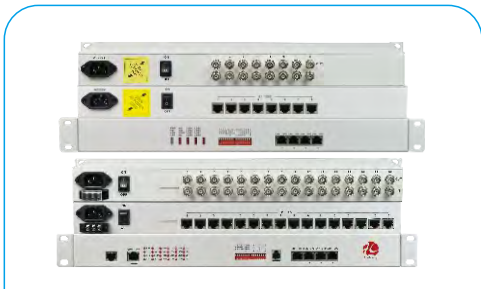


- ◆ 1-2*FE(Physicalisolation) Interface Converter
- ◆ E1-1*FE+2*RS232 Interface Converter
- ◆ E1-1*FE+4*RS232 Interface Converter



- ◆ 4E1-1*FE Interface Converter(Desktop Type)
- ◆ 4E1-4*FE Interface Converter(Desktop Type)

E1/Ethernet Interface Converter



- ◆ 8E1-1*FE Interface Converter
- ◆ 8E1-4*FE Interface Converter
- ◆ 16E1-1*FE Interface Converter
- ◆ 16E1-4*FE Interface Converter



- ◆ 4E1(75Ω+120Ω)-4FE Interface Converter
- ◆ 8E1(75Ω+120Ω)-4FE Interface Converter



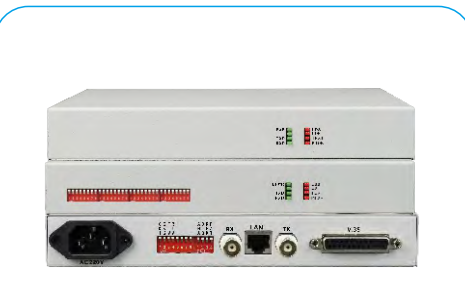
- ◆ 1E1 to Optic Ethernet Interface Converter
- ◆ 4E1 to 100 Base-FX Interface Converter
- ◆ 8E1 to 3FE+1*100 Base-FX Interface Converter
- ◆ 16E1 to 3FE+1*100 Base-FX Interface Converter
- ◆ 16E1 to 3GE+2*1000 Base-FX Interface Converter

POE Interface Converter

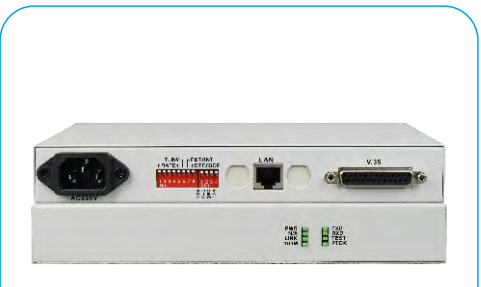
E1/V.35/V.24/RS530 Interface Converter



- ◆ 1E1to1FE POE Interface Converter
- ◆ 4E1to1FE POE Interface Converter (Support af/at,built-in power)



- ◆ Unframed E1-V.35 Interface Converter
- ◆ Framed E1-V.35 Interface Converter
- ◆ Unframed E1-V.24 Interface Converter
- ◆ Framed E1-V.24 Interface Converter
- ◆ Unframed E1-RS530 Interface Converter
- ◆ Framed E1-RS530 Interface Converter



- ◆ Ethernet to V.35 Interface Converter

E1-Serial Interface Converter

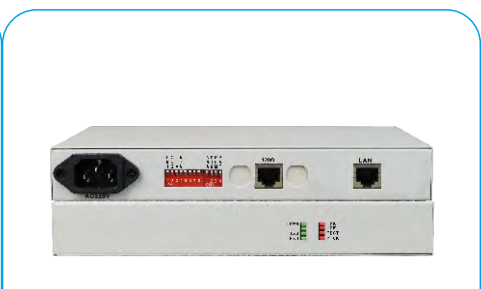
Co-Directional Interface Converter



- ◆ E1-RS232/422/485 Interface Converter
- ◆ E1-RS232/422/485 Interface Converter (Support 3interface at the same time)
- ◆ E1-Full Signal RS232 Interface Converter



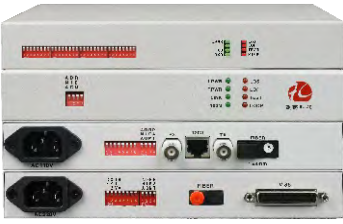
- ◆ E1-4*RS232/422/485 Interface Converter
- ◆ E1-8*RS232/422/485 Interface Converter
- ◆ E1-16*RS232/422/485 Interface Converter
- ◆ E1-31*RS232/422/485 Interface Converter



- ◆ Co-Directional 64K-FE Interface Converter
- ◆ Co-Directional 64K-V. 35 Interface Converter
- ◆ Co-Directional 64K-RS232/422/485 Converter

E1/V.35/V.24 Fiber Modem

E1 over IP



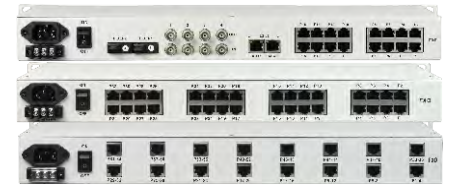
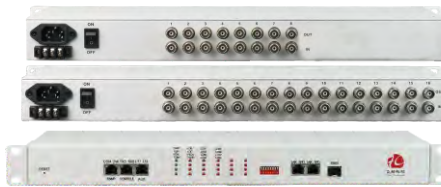
- ◆ Unframed E1 Fiber Modem
- ◆ Framed E1 Fiber Modem
- ◆ 2048K V.35 Fiber Modem
- ◆ N*64K V.35 Fiber Modem

- ◆ 1*FE Fiber Modem
- ◆ 4*FE Fiber Modem
- ◆ 1FE+2RS232 Fiber Modem (Ethernet bandwidth 2M)

- ◆ 1*E1 Over IP
- ◆ 4*E1 Over IP (Provide 2*FE+1*100 BaseFX SFP Ethernet 2*GE+1*1000 Base X SFP Ethernet)

E1/V.35/V.24 OverIP(TDM Over IP)

FXO/FXS Over IP



- ◆ 1*V.35 Over IP
- ◆ 1*V.24 Over IP (Provide 2*FE+1*100 BaseFX SFP Ethernet 2*GE+1*1000 Base X SFP Ethernet)

- ◆ 8*E1 Over IP
- ◆ 16*E1 Over IP (Provide 2*FE+1*100 BaseFX SFP Ethernet 2*GE+1*1000 Base X SFP Ethernet)

- ◆ 16FXO/FXS Over IP
- ◆ 30FXO/FXS Over IP
- ◆ 60FXO/FXS Over IP (Provide 2*FE+1*SFP Ethernet)

Modular Multi-Service Over IP Dry Contact/Serial Over IP

STM-1 Optical to Electric Interface Converter

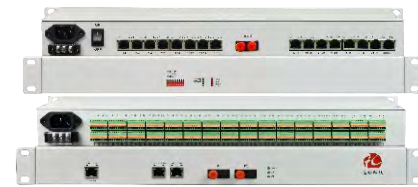


- ◆ Modular Multi-Service Over IP (4 slots, Support Max 4*4E1/4*16 Voice/4*2V.35/4*2V.24/4*8 Serial)

- ◆ Industrial 4 ch Dry Contact Over IP
- ◆ Industrial 2*RS232/422/485 Over IP
- ◆ Converged 64In&64 Out Dry Contact Over IP (Support Each Node Dry Contact and Serial Input)

- ◆ STM-1 Optical to Electric Converter (STM-1 of ATM to STM-1 of SDH Converter)

Drycontact Mux, Support Dry Contact and Wet Contact



- ◆ Mini 1-2ch Drycontact Mux
- ◆ 8ch Unidirectional/4ch Bidirectional Drycontact Mux
- ◆ 16ch Unidirectional/8ch Bidirectional Drycontact Mux
- ◆ 32ch Unidirectional/16ch Bidirectional Drycontact Mux (1+1 Backup)

- ◆ 64ch Unidirectional/32ch Bidirectional Dry Contact Mux
- ◆ 128ch Unidirectional/64ch Bidirectional Dry Contact Mux

- ◆ Industrial Type 16ch Unidirectional/8ch Bidirectional Dry Contact Optical Transceiver Mux
- ◆ Industrial Type 1+1 Fiber Backup 16ch Unidirectional/8ch Bidirectional Dry Contact Mux

Ring/Converged Dry Contact Optical Transceiver

4-20MA Analog Fiber Modem

USB Fiber Modem



- ◆ RingNetwork128ch Dry Contact Over Fiber (Each Node 1-4ch Dry Contact Center128ch)
- ◆ Converged128ch Dry Contact Over Fiber (Each Node 1-4ch Dry Contact Center128ch)



- ◆ Adam Module1-4 Channel Analog Fiber Mux
- ◆ Industrial Din-Rail 1-8 Channel Analog Fiber Mux(24V Output)
- ◆ 1-8 Channel 4-20mA Analog+4 Channel Serial 8 Channel Dry Contact Fiber Mux
- ◆ Industrial Din-Rail1-16Channel Analog Fiber Modem (FPGA Parallel Processing,not MCU,High Speed Sampling)



- ◆ USB2.0 Fiber Mux(Support High/full/low Speed Mode)
- ◆ USB3.0 Fiber Mux
- ◆ USB2.0+3.0 Automatic Recognition Mode Fiber Mux

Serial Fiber Mux



- ◆ Mini Single Channel Serial Fiber Modem
- ◆ Desktop Single Channel Serial Fiber Modem
- ◆ 4*RS232/422/485 Fiber Modem
- ◆ 8*RS232/422/485 Fiber Modem



- ◆ 16*RS232/422/485 Fiber Modem
- ◆ 31*RS232/422/485 Fiber Modem



- ◆ Industrial Din-Rail1-8 Channel Serial Fiber Modem
- ◆ 1+1Fiber Backup,Industrial Din-Rail 1-8ch Serial Fiber Modem
- ◆ Industrial Din-Rail Ring1-4ch Serial Fiber Modem

Converged Serial Fiber Mux

Full Signal RS232 Fiber Mux

Fiber Mux Providing RS232/422/485 Simultaneously



- ◆ Star Network, 12*Directional Serial Optical Fiber Hub



- ◆ Full Signal RS232 Fiber Modem (TransmitDCD,DTR,DSR,RTS,CTS,RI Handshake Signal Simultaneously)



- ◆ Desktop RS232/422/485 Fiber Modem
- ◆ 4*RS232/422/485 Fiber Modem
- ◆ Industrial Din-Rail1-4*RS232/422/485 (Each Channel Provide Rs232/422/485 Interface Simultaneously,Set By DIP Switch)

Serial Hub

Can Bus Fiber Modem

Profibus Fiber Mux



- ◆ 4*RS485 HUB
- ◆ 8*RS485 HUB
- ◆ 16*RS485 HUB



- ◆ Desktop 1*Can Bus Fiber Modem
- ◆ 1-2ch Can Bus Fiber Modem Adam Module
- ◆ 1-4ch Can Bus Fiber Modem Industrial Din-rail



- ◆ Industrial Din-Rail1*Profibus-DP Fiber Modem (Baud rate Adaptation,9600--12Mbps)
- ◆ Din-Rail Ring1*Profibus-DP Fiber Modem (Support Point To Point,Star,Chain, Ring Network Redundancy Topology)

Audio Fiber Mux



- ◆ 1-4ch RCA Audio Fiber Mux
- ◆ 1-8ch RCA Audio Fiber Mux
- ◆ 16ch RCA Audio Fiber Mux

XLR/AES Audio Fiber Mux



- ◆ 1-8ch XLR Analog/AES Audio Fiber Mux
- ◆ 16ch XLR Analog/AES Audio Fiber Mux
- ◆ E1-1 Channel Stereo Analog Audio(XLR) Codec
- ◆ E1-1 Channel AES Audio(XLR) Codec

E1-XLR/AES Audio Codes



- ◆ 1-4ch Stereo Analog Audio(XLR) Over Ethernet
- ◆ 1-4ch AES Audio(XLR) Over Ethernet

HD video Fiber mux



- ◆ HDMI/DVI(4K) Fiber mux
- ◆ CVI/TVI/AHD HD Analogue Fiber mux
- ◆ 3G/HD-SDI Fiber Mux
- ◆ Above All Support SNMP

E1 Distributor



- ◆ 1 in 8 out E1 Distributor
- ◆ 1 in 16 out E1 Distributor

E1 Protection Switch



- ◆ Desktop: 2*E1 to 4E1 Protection Switch
- ◆ 1U Rack 5E1 to 10E1 Protection Switch
- ◆ 4U*17 Card 2E1 to 4E1 Protection Switch

Single multi-mode converter/fiber optic repeater



- ◆ OEO Fiber Optical Repeater
- ◆ Single Multi-Mode Converter(Support 155M-3.125G Optical Port Rate)

Plug in Card/1U Card



- ◆ 1*2U Plug in Card Device
- ◆ 1U6 Slot Rack, Support Tdual Power(2U Card Can Be Media Converter Card, E1 Ethernet Card, Serial Fiber Modem Card, Voice Over Fiber Card)

17*2U Card Rack



- ◆ 2U*17 Cardrack, Support Dual Power(2U Card Can Be Media Converter Card, E1 Ethernet Card, Serial Fiber Modem Card, Voice Over Fiber Card)

4U*17 Card Rack



- ◆ 4U*17 Cardrack, Support Dual Power (Plug in all Kind of 4U Card, Support SNMP)
- ◆ 1U plug in Card Device (All Kinds Of 4U Cards Can Be Plugged In)

6U*13 Card Rack



- ◆ 6U*13 Card Rack, Support Dual Power (Plug in all Kind of 4U Card, Support SNMP)

SNMP Management System



- ◆ 2U/4U/6U SNMP Management Card
- ◆ SNMP Management Software

Success case



The Worldwide Largest Single-Aperture Radiotelescope FAST Project



Ningbo Traffic Police Electronic Police System



CNOOC Tianjin Branch



STATE GRID Zhejiang Hangzhou Branch



Xinjiang Urumqi International Airport



Jiuquan Satellite Launch Centre



Southern Power Grid: Macau Power Supply Project

Industrial Din Rail Type Fiber Mux

- Industrial Ethernet Switches
- 1-8*RS232/422/485 Fiber Mux
- 1-16*4-20MA/0-10V Analog Fiber Mux
- 1-16*Dry Contact/Wet Contact Fiber Mux
- CanBus Fiber Mux
- Profibus-DP Fiber Mux



Safe And Durable

Designed for harsh industrial environment



9-55V,AC or DC



Working temperature
-40°C~+85°C



Aluminium alloy IP40
protection grade



MTBF>100,000
hours



Dual power supply/reversed
polarity/overload protection



Lightning protection/surge/
inductive high voltage



High-efficiency cooling
design without fan



Shock resistance/shake/
free fall

1-960*Voice Multi-Service

8U Rack Type , Fiber Card With 4*E1+4*GE/4*physical-Isolation Ethernet Support 1+1 Fiber Back-Up
With 16*60*FXO/FXS Card With Console/SNMP Network Management And AC+DC/DC+DC/AC+AC Power Back-UP



Flexible Modular type

LCD Type With 4*FE/4*GE/4*physical-Isolation Ethernet Support 1+1 Fiber Back-Up
With Console/SNMP Network Management And AC+DC/DC+DC/AC+AC power Back-UP



4*E1/FE1(75Ω/BNC)



4*E1/FE1 (120Ω/RJ45)



2*V.35(2048/N*64K)



4*E&M 2/4 Wire



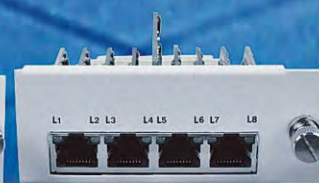
4*FXS/FXS/Magnet



8*FXO/FXS/Magnet



16*FXO/FXS/Magnet



8 * RS232/422/485



4E1/FE Converter

16*Dry/Wet Contact



FCTELCOM

HangZhou FCTEL Technology Co.,Ltd.

Tel: (+086)0571-87007055/56/57/75

Fax: (+086)0571-87007140

Skype: tracy.fctel

Website: www.fctel.cn

Alibaba website: futuretel.en.alibaba.com

Email: service@fctel.cn

Zip code: 310030

Address: 7F, Building 2, NO.9 XiYuan 2nd Road, West Lake Technology Park, Hangzhou, China.